



## CELA INSERVICE TRAINING

# Professional development at a time and location that suits your team

Choose from over 50 topics, delivered by our sector experts where, when and how you need it.



*We acknowledge the traditional custodians of the land on which we work and live.*

## How it works



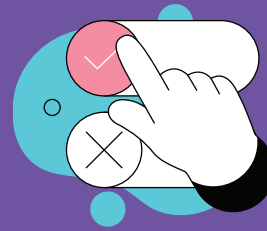
### 1. Select a topic

Choose a topic from our extensive training menu



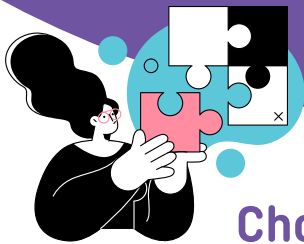
### 2. Choose a date

Call us to discuss a date and time that suits your team (Note: subject to trainer availability)



### 3. Decide on a delivery mode

Let us know whether you'd like your session delivered online via our interactive live webinar platform, or face to face.



## Choose a topic from our extensive training menu

#### FAMILIES AND COMMUNITIES

Building Genuine Partnerships with Families and Communities [LEARN MORE](#)

Recognising Vulnerability to Support Children's Wellbeing and Development [LEARN MORE](#) **APST ALIGNED**

#### HEALTH AND SAFETY

CHCPRT025 - Identify & Respond to Children and Young People at Risk - RTO ID: 90842 [LEARN MORE](#) **APST ALIGNED**

Child Protection NSW Overview - Refresher [LEARN MORE](#)

Engaging with the Principles of Active Supervision [LEARN MORE](#)

#### GOVERNANCE

Compliance in Everyday Practice [LEARN MORE](#)

Prepare Your Team For Assessment And Rating [LEARN MORE](#)

The Law and Regs for Nominated Supervisors [LEARN MORE](#)

So Now You're on a Committee [LEARN MORE](#)

#### LEADERSHIP

Principles in Action: Collaborative Leadership and Teamwork in Practice [LEARN MORE](#)

Dealing Effectively With Complaints [LEARN MORE](#)

How the Exceeding Themes Influence your Practice [LEARN MORE](#)

Leading your Team through Change [LEARN MORE](#)

The Director's Toolkit: Administrative Responsibilities [LEARN MORE](#)

The Director's Toolkit: Compliance & Quality [LEARN MORE](#)

The Director's Toolkit: Family And Community Partnerships [LEARN MORE](#)

The Director's Toolkit: Leadership & Advocacy [LEARN MORE](#)

The Director's Toolkit: The Team, Staff Relationships [LEARN MORE](#)

The Director's Toolkit: Working with Management, Planning & Policy [LEARN MORE](#)

Unpacking Self-Assessment and Quality Improvement Planning [LEARN MORE](#)



**We have used CELA several times for our customised needs. We always find staff so attentive and flexible. Nothing is too much for them. The knowledge of the trainers is second to none, they come from the sector and understand our needs, thank you!**

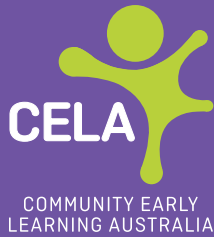
Virginia, North Ryde. Customised inservice session

PROGRAM AND PRACTICE	
5 Ways To Better Conversations With Children <b>APST ALIGNED</b>	<a href="#">LEARN MORE</a>
Acknowledging and Celebrating First Nations of Australia: A Starting Point- Webinar 2 Part Series <b>APST ALIGNED</b>	<a href="#">LEARN MORE</a>
Body Safety: Exploring Protection, Respect and Consent with Young Children <b>APST ALIGNED</b>	<a href="#">LEARN MORE</a>
Bringing the EYLF V2.0 to Life: An Overview of the How <b>APST ALIGNED</b>	<a href="#">LEARN MORE</a>
Principles in Action: Critical Reflection and Ongoing Professional Learning in Practice <b>APST ALIGNED</b>	<a href="#">LEARN MORE</a>
Practices in Action: Assessment and Evaluation for Learning, Development and Wellbeing in Practice <b>APST ALIGNED</b>	<a href="#">LEARN MORE</a>
Practices in Action: Cultural Responsiveness in Practice <b>APST ALIGNED</b>	<a href="#">LEARN MORE</a>
Principles in Action: Equity, Inclusion and High Expectations in Practice <b>APST ALIGNED</b>	<a href="#">LEARN MORE</a>
Practices in Action: Play Based Learning and Intentionality in Practice <b>APST ALIGNED</b>	<a href="#">LEARN MORE</a>
Principles in Action: Sustainability in Practice <b>APST ALIGNED</b>	<a href="#">LEARN MORE</a>
Connecting to the Joy of Children's Learning through Purposeful Observation <b>APST ALIGNED</b>	<a href="#">LEARN MORE</a>
Effective use of Technology with Children <b>APST ALIGNED</b>	<a href="#">LEARN MORE</a>
Embracing Neurodiversity: A strengths-based approach	<a href="#">LEARN MORE</a>
Inquiry Based Learning <b>APST ALIGNED</b>	<a href="#">LEARN MORE</a>
Literacy in the Early Years <b>APST ALIGNED</b>	<a href="#">LEARN MORE</a>

PROGRAM AND PRACTICE	
Loose Parts Play <b>APST ALIGNED</b>	<a href="#">LEARN MORE</a>
Music – who can live without it?	<a href="#">LEARN MORE</a>
Neuroinclusive Communication	<a href="#">LEARN MORE</a>
Neuroscience and Behaviour <b>APST ALIGNED</b>	<a href="#">LEARN MORE</a>
Numeracy in the Early Years <b>APST ALIGNED</b>	<a href="#">LEARN MORE</a>
Observation in Action: Essentials for Early Childhood Educators	<a href="#">LEARN MORE</a>
Play Theory And Behaviour	<a href="#">LEARN MORE</a>
Practical Approaches to Programming for Educational Leaders	<a href="#">LEARN MORE</a>
Practical Approaches to Programming for Educators <b>APST ALIGNED</b>	<a href="#">LEARN MORE</a>
Spotlight on the EYLF V2.0: Exploring the Changes <b>APST ALIGNED</b>	<a href="#">LEARN MORE</a>
Understanding Play Theory <b>APST ALIGNED</b>	<a href="#">LEARN MORE</a>

RELATIONSHIPS WITH CHILDREN	
Strong, Kind, Committed: Navigating the Circle of Security	<a href="#">LEARN MORE</a>
Children's Rights Children's Voices: Working With a Rights-Based Approach <b>APST ALIGNED</b>	<a href="#">LEARN MORE</a>

STAFFING	
Educator Wellbeing: Filling an Empty Bucket	<a href="#">LEARN MORE</a>
Managing Time Effectively in an Early Learning Service	<a href="#">LEARN MORE</a>
Professional and ethical practice in action	<a href="#">LEARN MORE</a>



## Customise your content

Would you like to have the content of your session tailored? Tell us about the specific challenges and needs of your team and we will review the content of your chosen session to reflect your needs. We can also include real scenarios from your service to contextualise the learning.

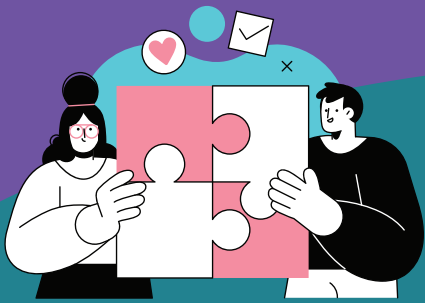
### Will you book a single session or a series?

We can develop and deliver a single session or a full package consisting of a series of sessions delivered over a period of time in order to support you taking progressive steps towards an important learning goal.



### FIND OUT MORE

Please complete the [enquiry form on this page](#) or contact us on **1800 157 818** to talk about inservice and customised training.



## Your contribution to our advocacy efforts

Through targeted learning and development, CELA promotes the professional growth of educators and teachers to meet the needs of their communities. In 2023, CELA trained over 10,200 sector professionals across all qualification levels. Training with CELA benefits the entire sector as profits from training fees are reinvested into our advocacy work, membership benefits and professional development initiatives.