

LEARNING & DEVELOPMENT

MAR - JUN 2022
• CALENDAR •

CELA's Learning & Development webinars equip educators with knowledge that changes practice and underpins quality early education.

MAR - JUN 2022 LEARNING & DEVELOPMENT

MARCH

- 01 MAR Inquiry Based Learning
- 02 MAR How The Exceeding Themes Influence Your Practices
- 03 MAR Practical Approaches To Programming For Educational Leaders
- 04 MAR Play Theory And Behaviour
- 07 MAR Leading Your Team Through Change
- 08 MAR Dealing Effectively with Complaints
- 08 MAR An Introduction To The Circle Of Security® For Early Educators
- 09 MAR Do You See What They See?
- 14 MAR Loose Parts Play **NESA ACCREDITED PD**
- 14, 21 & 28 MAR CHCPRT001: Identify & Respond To Children And Young People At Risk (RTO ID 90842) - 3 Part Series
- 15 MAR Tick Tock: Managing Time Effectively In ECEC
- 15 MAR Strengthening Relationships With Children
- 16 MAR Neuroscience And Behaviour **NESA ACCREDITED PD**
- 17 & 25 MAR Acknowledging And Celebrating First Nations of Australia: A Starting Point - 2 Part Series **NESA ACCREDITED PD**
- 17 MAR Compliance in Everyday Practice
- 18 MAR Understanding Play Theory **NESA ACCREDITED PD**
- 21 MAR Peaceful Curriculum For Babies And Toddlers
- 22 MAR Practical Approaches To Programming For New And Inexperienced Educators
- 22 MAR Self Assessment 1: Supporting The Why, What And How Of Quality Practices
- 23 MAR Children's Rights Children's Voices **NESA ACCREDITED PD**
- 24 MAR Numeracy In The Early Years **NESA ACCREDITED PD**
- 24 MAR Self Assessment 2: Using The Self-Assessment Tool: Strategies To Turn QIP Strengths Into Visible And Evidence Based Practice
- 24 MAR Emotion Coaching And Self-regulation
- 28 MAR Literacy In The Early Years **NESA ACCREDITED PD**
- 29 MAR Vulnerable & Valuable: Understanding And Working With Children From Disadvantaged Backgrounds
- 29 MAR OOSH Active Supervision
- 30 MAR The Law And Regs For Nominated Supervisors
- 31 MAR The Directors Toolkit: Compliance & Quality
- 31 MAR Understanding Play Theory **NESA ACCREDITED PD**

APRIL

- 01 APR Neuroscience And Behaviour **NESA ACCREDITED PD**
- 04 APR ECE Active Supervision
- 04 APR Supporting Children with Sensory Processing Difficulties
- 05 APR Prepare Your Team For Assessment And Rating
- 05 APR Demystifying Critical Reflection
- 06 APR Dealing Effectively with Complaints
- 07 APR The Directors Toolkit: Leadership & Advocacy
- 07 APR Loose Parts Play **NESA ACCREDITED PD**
- 08 APR 5 Ways To Better Conversations With Children
- 11 APR Meeting Children's Needs Through Inclusive Practices
- 12 APR How The Exceeding Themes Influence Your Practices
- 13 APR Understanding Play Theory **NESA ACCREDITED PD**
- 14 APR The Directors Toolkit: Working With Management: Planning & Policy
- 14 APR Numeracy In The Early Years **NESA ACCREDITED PD**
- 19 APR The Law And Regs For Nominated Supervisors
- 20 APR Inquiry Based Learning
- 21 APR The Directors Toolkit: The Team: Staff Relationships
- 22 APR Vulnerable & Valuable: Understanding And Working With Children From Disadvantaged Backgrounds
- 26 APR, 3 & 10 MAY CHCPRT001: Identify & Respond To Children And Young People At Risk (RTO ID 90842) - 3 Part Series
- 27 APR Children's Rights Children's Voices **NESA ACCREDITED PD**
- 27 APR Play Theory And Behaviour
- 28 APR The Directors Toolkit: Administrative Responsibilities
- 28 APR An Introduction To The Circle Of Security® For Early Educators
- 29 APR Educator Wellbeing: Filling An Empty Bucket

MAY

- 02 MAY Neuroscience And Behaviour NESA ACCREDITED PD
- 03 MAY Literacy In The Early Years NESA ACCREDITED PD
- 04 MAY Strengthening Relationships With Children
- 05 MAY The Directors Toolkit: Family And Community Partnerships
- 05 MAY The Law And Regs For Nominated Supervisors
- 06 MAY Loose Parts Play NESA ACCREDITED PD
- 09 MAY Compliance In Everyday Practice
- 09 MAY Meeting Children's Needs Through Inclusive Practices
- 10 MAY The Effects Of Trauma On Development
- 11 MAY Children's Rights Children's Voices NESA ACCREDITED PD
- 12 MAY How The Exceeding Themes Influence Your Practices
- 13 MAY Numeracy In The Early Years NESA ACCREDITED PD
- 16 MAY Self Assessment 1: Supporting The Why, What And How Of Quality Practices
- 17 MAY Understanding Play Theory NESA ACCREDITED PD
- 18 MAY An Introduction To The Circle Of Security® For Early Educators
- 18 MAY Vulnerable & Valuable: Understanding And Working With Children From Disadvantaged Backgrounds
- 19 MAY Inquiry Based Learning
- 19 MAY ECE Active Supervision
- 20 MAY Do You See What They See?
- 23 MAY Self Assessment 2: Using The Self-Assessment Tool: Strategies To Turn QIP Strengths Into Visible And Evidence Based Practice
- 24 MAY 5 Ways To Better Conversations With Children
- 25 MAY Neuroscience And Behaviour NESA ACCREDITED PD
- 26 MAY Emotion Coaching And Self-regulation
- 30 MAY Supporting Children with Sensory Processing Difficulties
- 30 MAY & Acknowledging And Celebrating First Nations of Australia: A Starting Point - 2 Part Series NESA ACCREDITED PD
- 31 MAY Practical Approaches To Programming For Educational Leaders

JUNE

- 01 JUN Practical Approaches To Programming For New And Inexperienced Educators
- 01 JUN Collaborative Partnerships With Families
- 02 JUN Children's Rights Children's Voices NESA ACCREDITED PD
- 06 JUN OOSH Active Supervision
- 07 JUN The Law And Regs For Nominated Supervisors
- 07 JUN Strengthening Relationships With Children
- 08 JUN Tick Tock: Managing Time Effectively In ECEC
- 08 JUN Vulnerable & Valuable: Understanding And Working With Children From Disadvantaged Backgrounds
- 09 JUN Loose Parts Play NESA ACCREDITED PD
- 09, 16 & 23 JUN CHCPRT001: Identify & Respond To Children And Young People At Risk (RTO ID 90842) - 3 Part Series
- 10 JUN Demystifying Critical Reflection
- 14 JUN Literacy In The Early Years NESA ACCREDITED PD
- 14 JUN Self Assessment 2: Using The Self-Assessment Tool: Strategies To Turn QIP Strengths Into Visible And Evidence Based Practice
- 15 JUN Prepare Your Team For Assessment And Rating
- 16 JUN Dealing Effectively With Complaints
- 17 JUN Neuroscience And Behaviour NESA ACCREDITED PD
- 20 JUN Loose Parts Play NESA ACCREDITED PD
- 21 JUN Numeracy In The Early Years NESA ACCREDITED PD
- 22 JUN An Introduction To The Circle Of Security® For Early Educators
- 23 JUN Do You See What They See?
- 24 JUN Understanding Play Theory NESA ACCREDITED PD
- 27 JUN Children's Rights Children's Voices NESA ACCREDITED PD
- 28 JUN 5 Ways To Better Conversations With Children
- 28 JUN How The Exceeding Themes Influence Your Practices
- 29 JUN Emotion Coaching And Self-regulation
- 29 JUN Vulnerable & Valuable: Understanding And Working With Children From Disadvantaged Backgrounds
- 30 JUN Play Theory And Behaviour

NOTE: Times and dates are subject to change. Please check the online PDF version of this calendar for additional sessions and updates: www.cela.org.au/training



ARE YOU A PROFICIENT TEACHER DUE TO COMPLETE YOUR MAINTENANCE OF ACCREDITATION HOURS IN 2022?

CELA has reviewed our course offerings against the Elective PD criteria and each of our courses has been aligned to the Australian Professional Standards for Teachers.

Please see our website for specific information for each course offering. More information regarding content of these courses is available on our website: www.cela.org.au/training

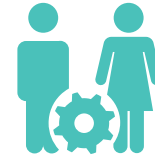
FOUR WAYS TO LEARN WITH CELA



CALENDAR TRAINING

Join one of our popular live webinars - many sessions are scheduled on multiple times and dates in order to maximise availability.

www.cela.org.au/training



INSERVICE

Can't make the time or date of a calendar session or need something delivered specifically for your team? CELA can bring the training to you, no matter where you are.

www.cela.org.au/training/inservice



INDIVIDUAL MENTORING

We offer a unique mentoring program, completely tailored to your needs and specifications.

www.cela.org.au/training/mentoring



SELF PACED

Our self paced online child protection training allows you to study CHCPRT001 Identify and Respond to Children and Young People at Risk online in your own time, with expert facilitator support. RTO ID: 90842

www.cela.org.au/training/self-paced

“

Amazing course that has provided me with a number of different areas that I would like to focus on more in-depth at my service.

“

The content was very informative. It was great to get so many useful links to keep researching after the session.