



# LEARNING & DEVELOPMENT

JAN - JUN 2024  
• CALENDAR •




**55+**  
TOPICS TO  
CHOOSE FROM

CELA's Learning & Development equips educators with knowledge that changes practice and underpins quality early education.

FOR FURTHER DETAILS OR TO BOOK:  
[www.cela.org.au/training](http://www.cela.org.au/training)



[www.cela.org.au](http://www.cela.org.au)  
[training@cela.org.au](mailto:training@cela.org.au)  
1800 157 818  
RTO ID 90842

 @communityearlylearningaustralia  
 @CELAust  
 @communityearlylearning

## JANUARY & FEBRUARY

<b>31 JAN, 1 &amp; 2 FEB</b>	CHCPRT025 - Identify & Report Children and Young People at Risk - RTO ID: 90842 3 part series
<b>01 FEB</b>	Practical Approaches to Programming for Educational Leaders
<b>05 FEB</b>	5 Ways To Better Conversations With Children <b>NESA ACCREDITED PD</b>
<b>05 FEB</b>	Spotlight on the EYLF V2.0: Exploring the Changes <b>NESA ACCREDITED PD</b>
<b>06 FEB</b>	Bringing the EYLF V2.0 to Life: An Overview of the How <b>NESA ACCREDITED PD</b>
<b>6 &amp; 13 FEB</b>	Acknowledging and Celebrating First Nations of Australia: A Starting Point 2 Part Series <b>NESA ACCREDITED PD</b>
<b>07 FEB</b>	Bringing the EYLF V2.0 to Life: Sustainability in Practice <b>NESA ACCREDITED PD</b>
<b>07 FEB</b>	Loose Parts Play <b>NESA ACCREDITED PD</b>
<b>08 FEB</b>	Bringing the EYLF V2.0 to Life: Play Based Learning and Intentionality in Practice <b>NESA ACCREDITED PD</b> <b>NEW</b>
<b>08 FEB</b>	Bringing the EYLF V2.0 to Life: Assessment and Evaluation for Learning, Development and Wellbeing in Practice <b>NEW</b>
<b>09 FEB</b>	Effective use of Technology with children <b>NESA ACCREDITED PD</b>
<b>12 FEB</b>	Inquiry Based Learning <b>NESA ACCREDITED PD</b>
<b>12 FEB</b>	Connecting to the Joy of Children's Learning through Purposeful Observation <b>NESA ACCREDITED PD</b>
<b>13 FEB</b>	Engaging with the Principles of Active Supervision <b>NESA ACCREDITED PD</b>
<b>13 FEB</b>	Supporting Confident and Capable Babies and Toddlers <b>NESA ACCREDITED PD</b>
<b>14 FEB</b>	The Law and Regs for Nominated Supervisors
<b>14 FEB</b>	Understanding Self-Assessment and Quality Improvement Planning
<b>15 FEB</b>	Bringing the EYLF V2.0 to Life: Cultural Responsiveness in Practice <b>NESA ACCREDITED PD</b>
<b>15 FEB</b>	Numeracy in the Early Years <b>NESA ACCREDITED PD</b>
<b>15 FEB</b>	Bringing the EYLF V2.0 to Life: An Overview of the How <b>NESA ACCREDITED PD</b>
<b>19 FEB</b>	Body Safety: Exploring Protection, Respect and Consent with Young Children <b>NESA ACCREDITED PD</b>
<b>20 FEB</b>	The Directors Toolkit: Compliance and Quality
<b>20 FEB</b>	Understanding Play Theory <b>NESA ACCREDITED PD</b>
<b>20 FEB</b>	Compliance In Everyday Practice
<b>21 FEB</b>	Addressing Behavioural Concerns with Families <b>NEW</b>
<b>21 FEB</b>	An Introduction to the Circle of Security for Early Educators
<b>22 FEB</b>	Neuroscience and Behaviour <b>NESA ACCREDITED PD</b>
<b>22 FEB</b>	Literacy in the Early Years <b>NESA ACCREDITED PD</b>
<b>23 FEB</b>	Recognising Vulnerability to Support Children's Wellbeing
<b>26 FEB</b>	Bringing the EYLF V2.0 to Life: Equity, Inclusion and High Expectations in Practice <b>NESA ACCREDITED PD</b>
<b>27 FEB</b>	Prepare Your Team For Assessment And Rating
<b>27 FEB</b>	Bringing the EYLF V2.0 to Life: Critical Reflection and Ongoing Professional Learning in Practice <b>NESA ACCREDITED PD</b> <b>NEW</b>
<b>27 FEB</b>	The Directors Toolkit: Leadership & Advocacy
<b>28 FEB</b>	Children's Rights Children's Voices Working with a Rights Based Approach
<b>29 FEB</b>	Supporting Children who Present With Anxiety or Stress
<b>29 FEB</b>	Emotion Coaching And Self-regulation

## MARCH

<b>04 MAR</b>	Spotlight on the EYLF V2.0: Exploring the Changes <b>NESA ACCREDITED PD</b>
<b>04 MAR</b>	Bringing the EYLF V2.0 to Life: Play Based Learning and Intentionality in Practice <b>NESA ACCREDITED PD</b> <b>NEW</b>
<b>05 MAR</b>	The Directors Toolkit: Working with Management, Planning & Policy
<b>05 MAR</b>	Bringing the EYLF V2.0 to Life: Assessment and Evaluation for Learning, Development and Wellbeing in Practice <b>NEW</b>
<b>5, 12 &amp; 19 MAR</b>	CHCPRT025 - Identify & Report Children and Young People at Risk - RTO ID: 90842 3 part series
<b>06 MAR</b>	5 Ways To Better Conversations With Children <b>NESA ACCREDITED PD</b>
<b>06 MAR</b>	Understanding Self-Assessment and Quality Improvement Planning
<b>07 MAR</b>	Effective use of Technology with children <b>NESA ACCREDITED PD</b>
<b>07 MAR</b>	Loose Parts Play <b>NESA ACCREDITED PD</b>
<b>08 MAR</b>	Practical Approaches to Programming for Educators
<b>11 MAR</b>	Bringing the EYLF V2.0 to Life: Sustainability in Practice <b>NESA ACCREDITED PD</b>
<b>12 MAR</b>	Inquiry Based Learning <b>NESA ACCREDITED PD</b>
<b>12 MAR</b>	The Directors Toolkit: The Team, Staff Relationships
<b>13 MAR</b>	Engaging with the Principles of Active Supervision <b>NESA ACCREDITED PD</b>
<b>13 MAR</b>	Numeracy in the Early Years <b>NESA ACCREDITED PD</b>
<b>13 MAR</b>	Bringing the EYLF V2.0 to Life: An Overview of the How <b>NESA ACCREDITED PD</b>
<b>14 &amp; 21 MAR</b>	Acknowledging and Celebrating First Nations of Australia: A Starting Point 2 Part Series <b>NESA ACCREDITED PD</b>
<b>15 MAR</b>	Understanding Play Theory <b>NESA ACCREDITED PD</b>
<b>18 MAR</b>	How the Exceeding Themes Influence Your Practices
<b>18 MAR</b>	Body Safety: Exploring Protection, Respect and Consent with Young Children <b>NESA ACCREDITED PD</b>
<b>19 MAR</b>	Connecting to the Joy of Children's Learning through Purposeful Observation <b>NESA ACCREDITED PD</b>
<b>19 MAR</b>	The Directors Toolkit: Administrative Responsibilities
<b>20 MAR</b>	Recognising Vulnerability to Support Children's Wellbeing
<b>20 MAR</b>	The Law and Regs for Nominated Supervisors
<b>21 MAR</b>	Bringing the EYLF V2.0 to Life: Cultural Responsiveness in Practice <b>NESA ACCREDITED PD</b>
<b>22 MAR</b>	Neuroscience and Behaviour <b>NESA ACCREDITED PD</b>
<b>25 MAR</b>	Bringing the EYLF V2.0 to Life: Equity, Inclusion and High Expectations in Practice <b>NESA ACCREDITED PD</b>
<b>25 MAR</b>	Literacy in the Early Years <b>NESA ACCREDITED PD</b>
<b>26 MAR</b>	Prepare Your Team For Assessment And Rating
<b>26 MAR</b>	The Directors Toolkit: Family and Community Partnerships
<b>26 MAR</b>	Supporting Confident and Capable Babies and Toddlers <b>NESA ACCREDITED PD</b>
<b>27 MAR</b>	Children's Rights Children's Voices Working with a Rights Based Approach
<b>27 MAR</b>	Bringing the EYLF V2.0 to Life: Critical Reflection and Ongoing Professional Learning in Practice <b>NESA ACCREDITED PD</b> <b>NEW</b>
<b>28 MAR</b>	Bringing the EYLF V2.0 to Life: Assessment and Evaluation for Learning, Development and Wellbeing in Practice <b>NEW</b>

## APRIL

03 APR	An Introduction to the Circle of Security for Early Educators
03 APR	Addressing Behavioural Concerns with Families <b>NEW</b>
03 APR	Practical Approaches to Programming for Educational Leaders
04 APR	Loose Parts Play <b>NESA ACCREDITED PD</b>
04 APR	Supporting Children who Present With Anxiety or Stress
04 APR	Emotion Coaching And Self-regulation
08 APR	Inquiry Based Learning <b>NESA ACCREDITED PD</b>
09 APR	Bringing the EYLF V2.0 to Life: Play Based Learning and Intentionality in Practice <b>NESA ACCREDITED PD</b> <b>NEW</b>
09 APR	Numeracy in the Early Years <b>NESA ACCREDITED PD</b>
10 APR	Compliance In Everyday Practice
10 APR	Bringing the EYLF V2.0 to Life: Sustainability in Practice <b>NESA ACCREDITED PD</b>
11 APR	5 Ways To Better Conversations With Children <b>NESA ACCREDITED PD</b>
11 APR	Bringing the EYLF V2.0 to Life: An Overview of the How <b>NESA ACCREDITED PD</b>
12 APR	The Law and Regs for Nominated Supervisors
15 APR	Understanding Self-Assessment and Quality Improvement Planning
15 APR	Supporting Confident and Capable Babies and Toddlers <b>NESA ACCREDITED PD</b>
16 APR	Children's Rights Children's Voices Working with a Rights Based Approach
16 APR	Connecting to the Joy of Children's Learning through Purposeful Observation <b>NESA ACCREDITED PD</b>
16 APR	Understanding Play Theory <b>NESA ACCREDITED PD</b>
17 APR	Recognising Vulnerability to Support Children's Wellbeing
18 APR	Body Safety: Exploring Protection, Respect and Consent with Young Children <b>NESA ACCREDITED PD</b>
18 APR	Engaging with the Principles of Active Supervision <b>NESA ACCREDITED PD</b>
19 APR	Neuroscience and Behaviour <b>NESA ACCREDITED PD</b>
22 APR	An Introduction to the Circle of Security for Early Educators
22 APR	Bringing the EYLF V2.0 to Life: Equity, Inclusion and High Expectations in Practice <b>NESA ACCREDITED PD</b>
23 APR	How the Exceeding Themes Influence Your Practices
23 APR	Supporting Children who Present With Anxiety or Stress
24 APR	Bringing the EYLF V2.0 to Life: Cultural Responsiveness in Practice <b>NESA ACCREDITED PD</b>
29 APR	Prepare Your Team For Assessment And Rating
29 APR	Bringing the EYLF V2.0 to Life: Critical Reflection and Ongoing Professional Learning in Practice <b>NESA ACCREDITED PD</b> <b>NEW</b>
30 APR	Literacy in the Early Years <b>NESA ACCREDITED PD</b>
30 APR & 7 MAY	Acknowledging and Celebrating First Nations of Australia: A Starting Point 2 Part Series <b>NESA ACCREDITED PD</b>

## MAY

1, 2 & 3 MAY	CHCPRT025 - Identify & Report Children and Young People at Risk - RTO ID: 90842 3 part series
02 MAY	Practical Approaches to Programming for Educators
02 MAY	Bringing the EYLF V2.0 to Life: Play Based Learning and Intentionality in Practice <b>NESA ACCREDITED PD</b> <b>NEW</b>
06 MAY	Bringing the EYLF V2.0 to Life: An Overview of the How <b>NESA ACCREDITED PD</b>
07 MAY	Inquiry Based Learning <b>NESA ACCREDITED PD</b>
08 MAY	Loose Parts Play <b>NESA ACCREDITED PD</b>
09 MAY	Bringing the EYLF V2.0 to Life: Assessment and Evaluation for Learning, Development and Wellbeing in Practice <b>NEW</b>
13 MAY	Recognising Vulnerability to Support Children's Wellbeing
15 MAY	Effective use of Technology with children <b>NESA ACCREDITED PD</b>
15 MAY	Neuroscience and Behaviour <b>NESA ACCREDITED PD</b>
16 MAY	Emotion Coaching And Self-regulation
16 MAY	Understanding Play Theory <b>NESA ACCREDITED PD</b>
16 MAY	Addressing Behavioural Concerns with Families <b>NEW</b>
17 MAY	Bringing the EYLF V2.0 to Life: Sustainability in Practice <b>NESA ACCREDITED PD</b>
20 MAY	Bringing the EYLF V2.0 to Life: Equity, Inclusion and High Expectations in Practice <b>NESA ACCREDITED PD</b>
21 MAY	Body Safety: Exploring Protection, Respect and Consent with Young Children <b>NESA ACCREDITED PD</b>
22 MAY	The Law and Regs for Nominated Supervisors
22 MAY	5 Ways To Better Conversations With Children <b>NESA ACCREDITED PD</b>
23 MAY	Bringing the EYLF V2.0 to Life: Cultural Responsiveness in Practice <b>NESA ACCREDITED PD</b>
23 MAY	Understanding Self-Assessment and Quality Improvement Planning
24 MAY	Children's Rights Children's Voices Working with a Rights Based Approach
27 MAY & 3 JUN	Acknowledging and Celebrating First Nations of Australia: A Starting Point 2 Part Series <b>NESA ACCREDITED PD</b>
28 MAY	Bringing the EYLF V2.0 to Life: Play Based Learning and Intentionality in Practice <b>NESA ACCREDITED PD</b> <b>NEW</b>
29 MAY	Numeracy in the Early Years <b>NESA ACCREDITED PD</b>
29 MAY	Literacy in the Early Years <b>NESA ACCREDITED PD</b>
30 MAY	Connecting to the Joy of Children's Learning through Purposeful Observation <b>NESA ACCREDITED PD</b>
30 MAY	Bringing the EYLF V2.0 to Life: Critical Reflection and Ongoing Professional Learning in Practice <b>NESA ACCREDITED PD</b> <b>NEW</b>
31 MAY	Engaging with the Principles of Active Supervision <b>NESA ACCREDITED PD</b>



## JUNE

03 JUN	Spotlight on the EYLF V2.0: Exploring the Changes <b>NESA ACCREDITED PD</b>
04 JUN	Emotion Coaching And Self-regulation
04 JUN	An Introduction to the Circle of Security for Early Educators
05 JUN	Bringing the EYLF V2.0 to Life: An Overview of the How <b>NESA ACCREDITED PD</b>
06 JUN	Bringing the EYLF V2.0 to Life: Assessment and Evaluation for Learning, Development and Wellbeing in Practice <b>NEW</b>
07 JUN	Bringing the EYLF V2.0 to Life: Sustainability in Practice <b>NESA ACCREDITED PD</b>
11 JUN	The Law and Regs for Nominated Supervisors
11 JUN	Effective use of Technology with children <b>NESA ACCREDITED PD</b>
12 JUN	Supporting Children who Present With Anxiety or Stress
12 JUN	Addressing Behavioural Concerns with Families <b>NEW</b>
12, 19 & 26 JUN	CHCPRT025 - Identify & Report Children and Young People at Risk - RTO ID: 90842 3 part series
14 JUN	5 Ways To Better Conversations With Children <b>NESA ACCREDITED PD</b>
17 JUN	Bringing the EYLF V2.0 to Life: Critical Reflection and Ongoing Professional Learning in Practice <b>NESA ACCREDITED PD</b> <b>NEW</b>
18 JUN	Children's Rights Children's Voices Working with a Rights Based Approach
18 JUN	Understanding Play Theory <b>NESA ACCREDITED PD</b>
19 JUN	Recognising Vulnerability to Support Children's Wellbeing
19 JUN	How the Exceeding Themes Influence Your Practices
20 JUN	Bringing the EYLF V2.0 to Life: Equity, Inclusion and High Expectations in Practice <b>NESA ACCREDITED PD</b>
20 JUN	Connecting to the Joy of Children's Learning through Purposeful Observation <b>NESA ACCREDITED PD</b>
21 JUN	Understanding Self-Assessment and Quality Improvement Planning
24 JUN	Loose Parts Play <b>NESA ACCREDITED PD</b>
25 JUN	Body Safety: Exploring Protection, Respect and Consent with Young Children <b>NESA ACCREDITED PD</b>
25 JUN	Inquiry Based Learning <b>NESA ACCREDITED PD</b>
26 JUN	Literacy in the Early Years <b>NESA ACCREDITED PD</b>
26 JUN	Numeracy in the Early Years <b>NESA ACCREDITED PD</b>
27 JUN	Neuroscience and Behaviour <b>NESA ACCREDITED PD</b>
28 JUN	Bringing the EYLF V2.0 to Life: Cultural Responsiveness in Practice <b>NESA ACCREDITED PD</b>

## SELF-PACED ONLINE STUDY

Leadership: Empowering and Engaging the Team — Micro Credential

Understanding Neuroscience to Support Children's Behaviour — Micro Credential **NESA ACCREDITED PD**

CHCPRT025 Identify and Report Children and Young People at Risk (RTO ID 90842) **NEW**

Child Protection NSW Refresher

Approved Provider and Governance Portal

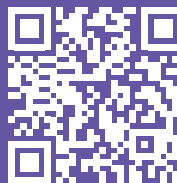
Management Committee Training Portale **NEW**

## COMING SOON

Bringing the EYLF V2.0 to Life: Collaborative Leadership in Practice

FOR FURTHER DETAILS OR TO BOOK:

[www.cela.org.au/training](http://www.cela.org.au/training)



[www.cela.org.au](http://www.cela.org.au)  
[training@cela.org.au](mailto:training@cela.org.au)  
 1800 157 818  
 RTO ID 90842



@communityearlylearningaustralia



@CELAust



@communityearlylearning

*NOTE: Times and dates are subject to change. Please check the online PDF version of this calendar for additional sessions and updates:*  
[www.cela.org.au/training](http://www.cela.org.au/training)

## TRAINING SESSIONS BY NAME

5 Ways To Better Conversations With Children <b>NESA ACCREDITED PD</b>	<a href="#">LEARN MORE</a>	Loose Parts Play <b>NESA ACCREDITED PD</b>	<a href="#">LEARN MORE</a>
Acknowledging and Celebrating First Nations of Australia: A Starting Point- Webinar 2 Part Series <b>NESA ACCREDITED PD</b>	<a href="#">LEARN MORE</a>	Making Meaningful Music With Our Early Learners	<a href="#">LEARN MORE</a>
Addressing Behavioural Concerns with Families <b>NEW</b>	<a href="#">LEARN MORE</a>	Management Committee Training Portal <b>NEW</b>	<a href="#">LEARN MORE</a>
An Introduction to the Circle of Security for Early Educators	<a href="#">LEARN MORE</a>	More than just Numbers: Exploring Measuring Skills in the Early Years	<a href="#">LEARN MORE</a>
Approved Provider and Governance Portal - Self-Paced Online	<a href="#">LEARN MORE</a>	More Than Just Numbers: Exploring Number Sense and Subitising Skills in the Early Years	<a href="#">LEARN MORE</a>
Body Safety: Exploring Protection, Respect and Consent with Young Children <b>NESA ACCREDITED PD</b>	<a href="#">LEARN MORE</a>	More than just Numbers: Exploring Patterning and Symmetry in the Early Years	<a href="#">LEARN MORE</a>
Bringing the EYLF V2.0 to Life: An Overview of the How <b>NESA ACCREDITED PD</b>	<a href="#">LEARN MORE</a>	More than just Numbers: Exploring Spatial Reasoning and Mapping Skills in the Early Years	<a href="#">LEARN MORE</a>
Bringing the EYLF V2.0 to Life: Assessment and Evaluation for Learning, Development and Wellbeing in Practice <b>NEW</b>	<a href="#">LEARN MORE</a>	Neuroscience and Behaviour <b>NESA ACCREDITED PD</b>	<a href="#">LEARN MORE</a>
Bringing the EYLF V2.0 to Life: Critical Reflection and Ongoing Professional Learning in Practice <b>NESA ACCREDITED PD</b> <b>NEW</b>	<a href="#">LEARN MORE</a>	Numeracy in the Early Years <b>NESA ACCREDITED PD</b>	<a href="#">LEARN MORE</a>
Bringing the EYLF V2.0 to Life: Cultural Responsiveness in Practice <b>NESA ACCREDITED PD</b>	<a href="#">LEARN MORE</a>	Playing Musically With Our Babies and Toddlers	<a href="#">LEARN MORE</a>
Bringing the EYLF V2.0 to Life: Equity, Inclusion and High Expectations in Practice <b>NESA ACCREDITED PD</b>	<a href="#">LEARN MORE</a>	Practical Approaches to Programming for Educational Leaders	<a href="#">LEARN MORE</a>
Bringing the EYLF V2.0 to Life: Play Based Learning and Intentionality in Practice <b>NESA ACCREDITED PD</b> <b>NEW</b>	<a href="#">LEARN MORE</a>	Practical Approaches to Programming for Educators	<a href="#">LEARN MORE</a>
Bringing the EYLF V2.0 to Life: Sustainability in Practice <b>NESA ACCREDITED PD</b>	<a href="#">LEARN MORE</a>	Prepare Your Team For Assessment And Rating	<a href="#">LEARN MORE</a>
CHCPRT025 - Identify & Report Children and Young People at Risk (RTO ID: 90842) - 3 Part Webinar	<a href="#">LEARN MORE</a>	Recognising Vulnerability to Support Children's Wellbeing and Development <b>NESA ACCREDITED PD</b>	<a href="#">LEARN MORE</a>
CHCPRT025 Identify and Report Children and Young People at Risk (RTO ID 90842) - Self-Paced Online	<a href="#">LEARN MORE</a>	Spotlight on the EYLF V2.0: Exploring the Changes <b>NESA ACCREDITED PD</b>	<a href="#">LEARN MORE</a>
Child Protection NSW Refresher - Self-Paced Online	<a href="#">LEARN MORE</a>	Standard Mental Health First Aid - Face to Face 2 Part Series	<a href="#">LEARN MORE</a>
Children's Rights Children's Voices: Working With a Rights-Based Approach <b>NESA ACCREDITED PD</b>	<a href="#">LEARN MORE</a>	Supporting Children who Present With Anxiety or Stress	<a href="#">LEARN MORE</a>
Compliance in Everyday Practice	<a href="#">LEARN MORE</a>	Supporting Confident and Capable Babies and Toddlers <b>NESA ACCREDITED PD</b>	<a href="#">LEARN MORE</a>
Connecting to the Joy of Children's Learning through Purposeful Observation <b>NESA ACCREDITED PD</b>	<a href="#">LEARN MORE</a>	The Director's Toolkit: Administrative Responsibilities	<a href="#">LEARN MORE</a>
Effective use of Technology with children <b>NESA ACCREDITED PD</b>	<a href="#">LEARN MORE</a>	The Director's Toolkit: Compliance & Quality	<a href="#">LEARN MORE</a>
Emotion Coaching And Self-regulation	<a href="#">LEARN MORE</a>	The Director's Toolkit: Family And Community Partnerships	<a href="#">LEARN MORE</a>
Engaging with the Principles of Active Supervision <b>NESA ACCREDITED PD</b>	<a href="#">LEARN MORE</a>	The Director's Toolkit: Leadership & Advocacy	<a href="#">LEARN MORE</a>
Establishing Inclusive Practice: Conversations and Inclusion Plans	<a href="#">LEARN MORE</a>	The Director's Toolkit: The Team, Staff Relationships	<a href="#">LEARN MORE</a>
How the Exceeding Themes Influence your Practice	<a href="#">LEARN MORE</a>	The Director's Toolkit: Working with Management, Planning & Policy	<a href="#">LEARN MORE</a>
Inquiry Based Learning <b>NESA ACCREDITED PD</b>	<a href="#">LEARN MORE</a>	The How, What and Why of Effective School Transition: Setting Children up for Success	<a href="#">LEARN MORE</a>
Leadership: Empowering and Engaging the Team — Micro Credential SELF PACED	<a href="#">LEARN MORE</a>	The Law and Regs for Nominated Supervisors	<a href="#">LEARN MORE</a>
Leading your Team through Change	<a href="#">LEARN MORE</a>	Understanding Neuroscience to Support Children's Behaviour — Micro Credential <b>NESA ACCREDITED PD</b>	<a href="#">LEARN MORE</a>
Literacy in the Early Years <b>NESA ACCREDITED PD</b>	<a href="#">LEARN MORE</a>	Understanding Play Theory <b>NESA ACCREDITED PD</b>	<a href="#">LEARN MORE</a>
		Understanding Self-Assessment and Quality Improvement Planning	<a href="#">LEARN MORE</a>

FOR FURTHER DETAILS OR TO BOOK: [WWW.CELA.ORG.AU/TRAINING](http://WWW.CELA.ORG.AU/TRAINING)



# Four ways to learn with CELA



## CALENDAR TRAINING

Join one of our popular live webinars - many sessions are scheduled on multiple times and dates in order to maximise availability.

[www.cela.org.au/training](http://www.cela.org.au/training)



## INSERVICE

Can't make the time or date of a calendar session or need something delivered specifically for your team? CELA can bring the training to you, no matter where you are.

[www.cela.org.au/training/inservice](http://www.cela.org.au/training/inservice)



## INDIVIDUAL MENTORING

We offer a unique mentoring program, completely tailored to your needs and specifications.

[www.cela.org.au/training/mentoring](http://www.cela.org.au/training/mentoring)



## SELF PACED

Explore our range of self-paced, online courses covering topics such as child protection, leadership, management committees, approved providers and behaviour support.

[www.cela.org.au/training/self-paced](http://www.cela.org.au/training/self-paced)

“

Training is so important and I believe CELA do a fabulous job. Especially with regards to providing access for remote services!”

Judy  
Preschool Director

“

I would recommend this course to other organisations because you will be reassured that educators have received high-quality, comprehensive training.

Andrea  
Educational Leader, Children's Services

# Why train with CELA?



## TRUSTED BY '000S

Over 9,100 ECEC professionals like you boosted their knowledge with CELA last year.



## COMMUNITY-DRIVEN

As a not-for-profit peak body, profits made from our training courses are funnelled back into our advocacy and professional development initiatives, so training with us benefits the entire sector.



## FLEXIBLE

We offer live webinar, self-paced and inservice options to cater to all service requirements and staff availabilities.



## ON THE PULSE

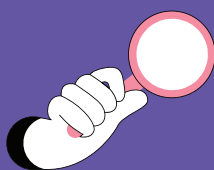
We offer over 50 topics including live webinar and self-paced options to fit every learning style and level of proficiency, with new topics added regularly.



## LEVERAGE OUR EXPERTISE

Our programs are designed and facilitated by seasoned experts, ensuring you're always learning from sector-leading professionals.

MEMBERS RECEIVE  
17% DISCOUNT ON  
TRAINING CALENDAR  
SESSIONS



Explore our calendar: [www.cela.org.au/training](http://www.cela.org.au/training)