

GIFTEDNESS DESCRIPTORS IN EARLY CHILDHOOD

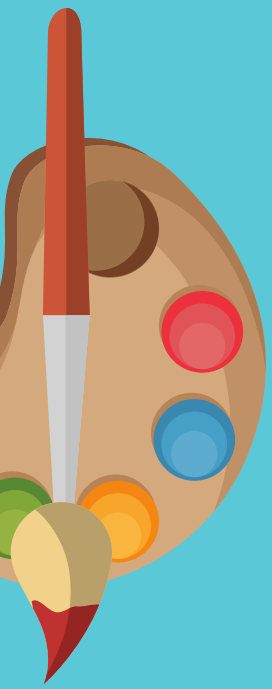
A guide to the descriptors for levels of giftedness in early years. Bear in mind that intellectually gifted children's physical development, such as eye-hand coordination, will be at age-appropriate levels, or even lag behind.

MODERATELY GIFTED

About one in 100 children is moderately gifted. Most services have at least one moderately gifted child enrolled at all times.

Listens to books before 9 months, knows letters and colours by 20 months, counts, prints letters and numbers and ask a lot of questions by three. By four knows many sight words and may be reading.

Artwork or building creations will show complexity. Aware that they know more than others, they may appear overbearing or arrogant, take over play, and be seen as 'bossy'. This can be addressed by acceleration into an older group from the age of three

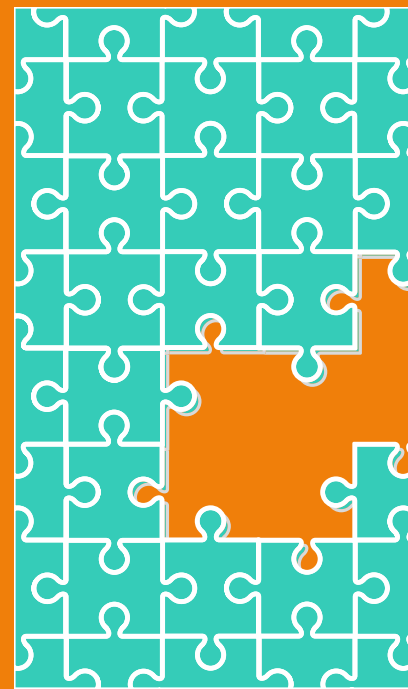


HIGHLY GIFTED

About one in 1000 children is highly gifted.

You may see this child every few years. Alert from birth onwards, loves books and understands language by six months. Solves 35+ piece puzzles and knows the alphabet by age two, and reads before attending school.

They are sensitive and may have occasional 'melt-downs'. May enjoy working with technology and talking to the teachers. They may attempt to play with others, but their language and play is too complex for typically developing children. Pair them with older children or peers of the same mental age.



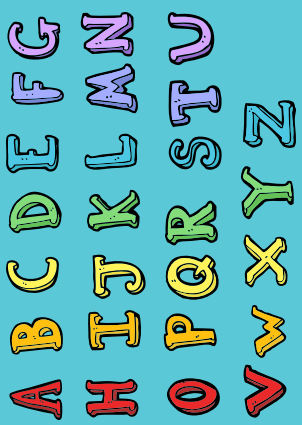
EXCEPTIONALLY GIFTED

About one in 10,000 children is exceptionally gifted and they may rarely appear in your service.

They will love books by three to four months and by 15-22 months they will have extensive and complex language with huge vocabularies, and know the entire alphabet. By age five they read for pleasure and information and play board games.

The lack of agency these children experience in a children's service may cause them to have frequent 'melt-downs' caused by frustration at being placed in an unsuitable situation.

They may spend much of the preschool day choosing to complete maths workbooks or reading.



PROFOUNDLY/EXTREMELY GIFTED

About one in 100,000 children is profoundly gifted. You may only meet one such child in your career.

They can be gifted in every possible area from an early age. Everything develops even sooner and with more intensity than at the other levels of giftedness.

These children may require home schooling and mentoring. They will have external social contact through sports, lessons in music or art, or events for gifted children. You can expect them to enter university early to ensure the pace and level of learning is suitable to their intellectual needs.



Source: Dr Mimi Wellisch, referencing Ruf, D. L. (2006). How smart is my child? <http://www.iowatag.org/wp-content/uploads/2012/07/HowSmartisMyChild.pdf>

Ruf, D. L. (2005). 5 Levels of Gifted: School Issues and Educational Options. Scottsdale, AZ: Great Potential Press.

Graphic created for CELA's Rattler+Broadside magazine